



# Important Pipeline Safety Information

## 管道安全重要信息

### Design and Landscaping Guidelines 园艺设计施工指南

---

You have received this brochure because you live or own property near the PKM Canada (Jet Fuel) Inc. Jet Fuel Pipeline. PKM Canada (Jet Fuel) Inc. is a subsidiary of Pembina Pipeline Corporation.

As part of our Public Awareness program, we are committed to informing you about the presence of pipelines in your community. Please keep for future reference.

您收到本手册是由于您居住或者拥有财产在加拿大PKM (Jet Fuel)公司的管道附近。它是Pembina 管道公司的一部分。



This brochure contains important information to help you work safely around pipelines when you are landscaping, planting trees, or installing fences and garden features on your property.

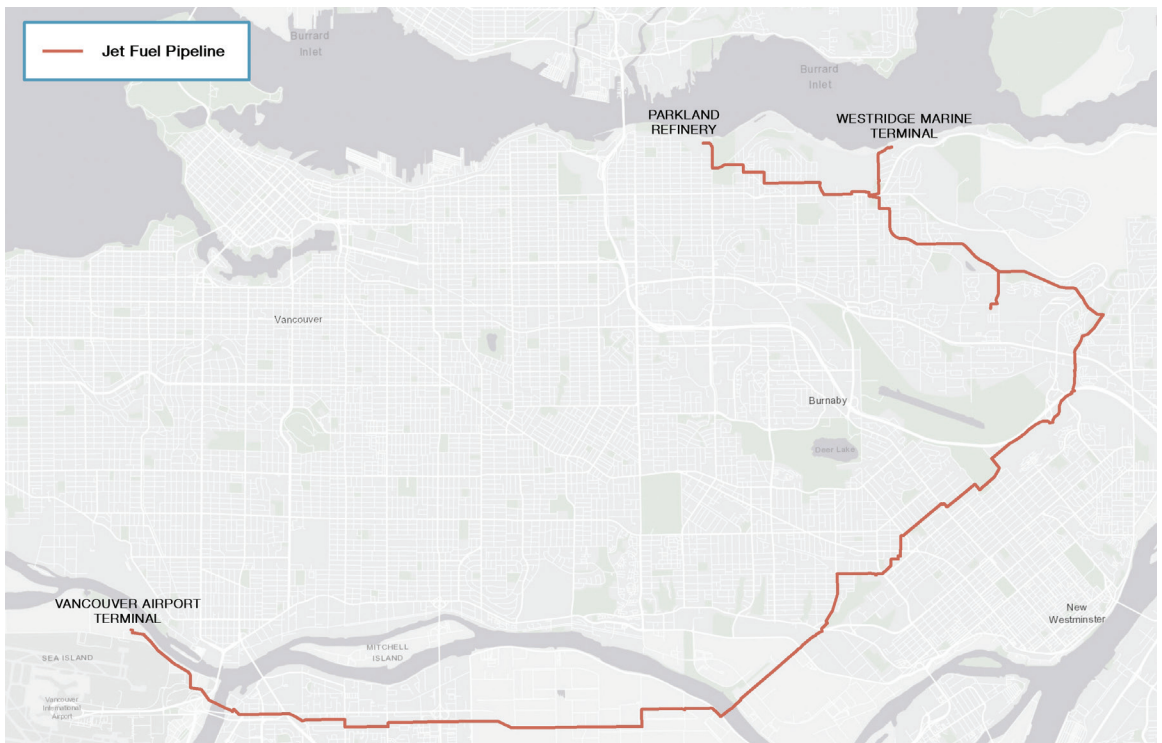
## Who is Pembina?

We are a leading North American transportation and midstream service provider. For more than 65 years, we have been connecting oil, natural gas, and natural gas liquids production to markets that need it. Pembina owns an integrated system of pipelines that transport various hydrocarbon liquids and natural gas products. We also own gas gathering and processing facilities, and an oil and natural gas liquids infrastructure and logistics business. As the owner and operator of thousands of kilometres of pipelines, our highest priority is operating our assets safely and reliably to protect the people, communities and environment located nearby.

作为我们公共安全宣传的一部分，我们致力于通知和教育您关于社区内的管道常识。这本手册包含重要的在管道周围您的土地范围内进行有关园艺，种树，建围栏或者安装园艺设施的施工安全信息。



The Jet Fuel Pipeline is used to transport aviation turbine (jet) fuel from locations in Burnaby to the Vancouver International Airport in Richmond. The Jet Fuel Pipeline is approximately 40 km in length and 6 inches in diameter.



## Locating the Pipeline

Our pipelines are found in a road allowance or right-of-way, which is a narrow stretch of land that provides safe access for monitoring and maintenance of the pipeline.

Pipeline markers provide important safety information such as the type of product carried, the local One Call number and Pembina's 24-Hour Emergency Notification Number.

Although markers identify that a pipeline is in the area, they do not give the exact location or depth – only a qualified Pembina representative can do so.

### Click or Call Before You Dig

If you are planning landscaping or digging activities on your property near the Jet Fuel Pipeline, you or your contractor must notify the local One-Call Centre. A Pembina representative will locate and mark the location of the pipeline and contact you to discuss your planned digging activities.

You can access the nearest One-Call Centre to make a locate request anywhere in Canada at:

[clickbeforeyoudig.com](http://clickbeforeyoudig.com).



British Columbia One Call

1-800-474-6886

bc1c.ca



## Landscaping around pipelines on your property

Pembina's pipelines are monitored 24 hours a day, 7 days a week, and 365 days a year.

Pembina requires access to the right-of-way for pipeline monitoring and maintenance to ensure the safety of the public and the environment.

On the pipeline right-of-way, you may plant the following:

- Flower beds
- Vegetable gardens
- Lawns

However, these activities require that you contact your local One-Call Centre before you start digging.

Pipeline right-of-ways must be accessible to Pembina personnel for regular monitoring and maintenance, and in the unlikely event of an emergency.

**The following items obstruct access and limit visual inspections and are not permitted on the right-of-way:**

- Sheds
- Concrete patios
- Pools
- Hot tubs
- Decks

**The following items are permitted on the right-of-way, but will require consent Pembina:**

- Fences \*
- Ditches and swales
- Retaining walls
- Paved and gravel walkways
- Low shrubbery

\* Fences may cross over the pipeline, but should not run parallel to it. The distance from the centerline of the pipe to the centerline of a post should be at least 2 metres (6.5 feet).

Note these lists include a sample of items permitted and not permitted on a right-of-way. If you are unsure if your item is permitted, please contact Pembina or your local One-Call Centre.

# How to obtain written consent from Pembina

All landscaping activity within 30 metres (100 feet) from the centre of the pipe requires notification to the local One-Call Centre. If the digging activity is within 10 metres, written consent from Pembina is required before any landscaping begins.

If your proposed project requires installing anything of permanent nature within the pipeline right-of-way, such as a fence or post, then a Crossing Agreement will also be required.

## Steps to obtain written consent and/or a Crossing Agreement

Email [landrequests@pembina.com](mailto:landrequests@pembina.com) with your name, legal land description, and a description of the work you would like to do.

Pembina will contact you and walk you through how to submit a request for permission to proceed with your activity in, along or adjacent to the right-of-way.

**Pembina will review your request once your information has been received. Pembina may:**

- Grant consent with standard conditions; or
- Grant consent that requires specific conditions be met to ensure safety; or
- Work with you to find solutions and resolve issues regarding the consent request; or
- Deny consent in the rare situation that a feasible safety solution cannot be found.

**Once consent has been granted, you must:**

Make a locate request to your local One-Call Centre at least three business days before beginning the work. Pembina will arrange for a Company representative to be on site to inspect the area at time of activity.

Always keep the written consent or Crossing Agreement onsite. Follow all terms and conditions laid out in the consent, and all instructions from Pembina personnel onsite.

If you have additional questions, please contact Pembina at **403-231-7500** or toll free at **1-888-428-3222** and we will work with you to address your needs.



# Suitable plants on a right-of-way

Dividing your property into plant growth areas will help you plan the types of vegetation and their location on your property, while ensuring vegetation compatibility with the right-of-way.

## Low growth area

- Directly over and within 3 metres (10 feet) of the pipeline
- The mature plant height restrictions is 1 metre (3 feet) high

## Mid growth area

- Right-of-way areas outside of 3 metres (10 feet) of the pipeline
- The mature plant height restriction is 1 to 1.8 metres
- (3 to 6 feet) high

## Tall growth area

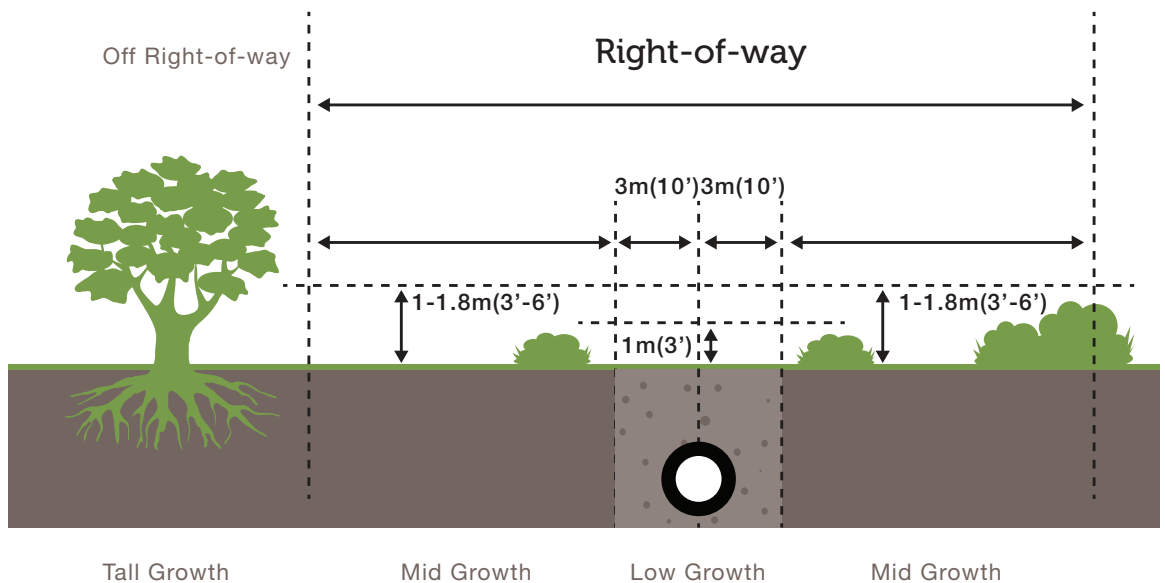
- Outside of and not overhanging the right-of-way



## Maximum vegetation heights on the right-of-way

Do not plant tall growing vegetation on the right-of-way. Tree canopies overhanging the right-of-way restrict aerial inspection, right-of-way identity and operational pipeline access. They are considered to be within the right-of-way, even if the trunk is outside the boundary.

The mature growth height of vegetation must not exceed 1 metre (3 feet) within 3 metres (10 feet) of the pipeline and 1.8 metres (6 feet) on remaining portions of the right-of-way.





## Helpful tips for planning landscaping activities

Start with a scale drawing of your property. Using a ruler and grid paper or a copy of the plan, draw the basic elements of your property to scale. This will help you position the main features of the property.

Features to include:

- Property lines and lengths
- Position and dimensions of your house
- Right-of-way and pipeline location
- Permanent structures such as driveways, sheds, fences and walkways
- Utilities servicing the property such as power lines, gas lines, water lines, irrigation system, drains, septic fields and wells
- Existing landscaping features such as trees, gardens, retaining walls and drainage ditches

### Helpful tips:

Make a few photocopies of your original scale drawing before filling in the details

Use a pencil - once the field drawing is done, transfer the information into ink and photocopy

Establish 'North' and mark the direction on your drawing

## Government Regulations

The operation of the Jet Fuel Pipeline is regulated provincially by the BC Oil and Gas Commission.

Any individual or organization conducting a ground disturbance activity on or near our pipelines or facilities must adhere to all applicable regulations.

You can find more information on the regulator website:

- BC Energy Regulator: [www.bc-er.ca](http://www.bc-er.ca)



If you have additional questions, please contact Pembina at **403-231-7500** or toll free at **1-888-428-3222** and we will work with you to address your needs.



## 24-hour Emergency Response Number: **1-800-360-4706**

If you notice any unusual or suspicious activity on or near the ROW, please report it by calling 9-1-1 first, followed by Pembina's 24-hour emergency number above.

## Click before you dig



British Columbia One Call

1-800-474-6886  
bc1c.ca

## How to contact us

Pembina strives to be a trusted member of the community. We're committed to open, two-way communication with our stakeholders. We welcome the opportunity to make a connection with you — please contact us in any of the following ways.

### Community Relations:

Phone Toll Free: **1-888-920-1979** (Non-emergency calls only)  
Email: [community@pembina.com](mailto:community@pembina.com)

Pembina's head office:

### Pembina Pipeline Corporation

4000, 585 - 8 Avenue S.W.  
Calgary, Alberta, Canada T2P 1G1

Phone: **403-231-7500**  
Toll Free: **1-888-428-3222**

This brochure contains important pipeline safety information.

If you have questions, email  
[landrequests@pembina.com](mailto:landrequests@pembina.com)

本手册包含重要的管道安全信息。请为其提供中文翻译。如果您有任何问题，请发送电子邮件至

[landrequests@pembina.com](mailto:landrequests@pembina.com)

If you have additional questions, please contact Pembina at **403-231-7500** or toll free at **1-888-428-3222** and we will work with you to address your needs.

如果您有任何问题，请致电 403-231-7500 或者免费电话 1-888-428-3222。我们会为您提供帮助。

For more information about pipeline safety, please visit  
[www.pembina.com/safetyaroundpipelines](http://www.pembina.com/safetyaroundpipelines)